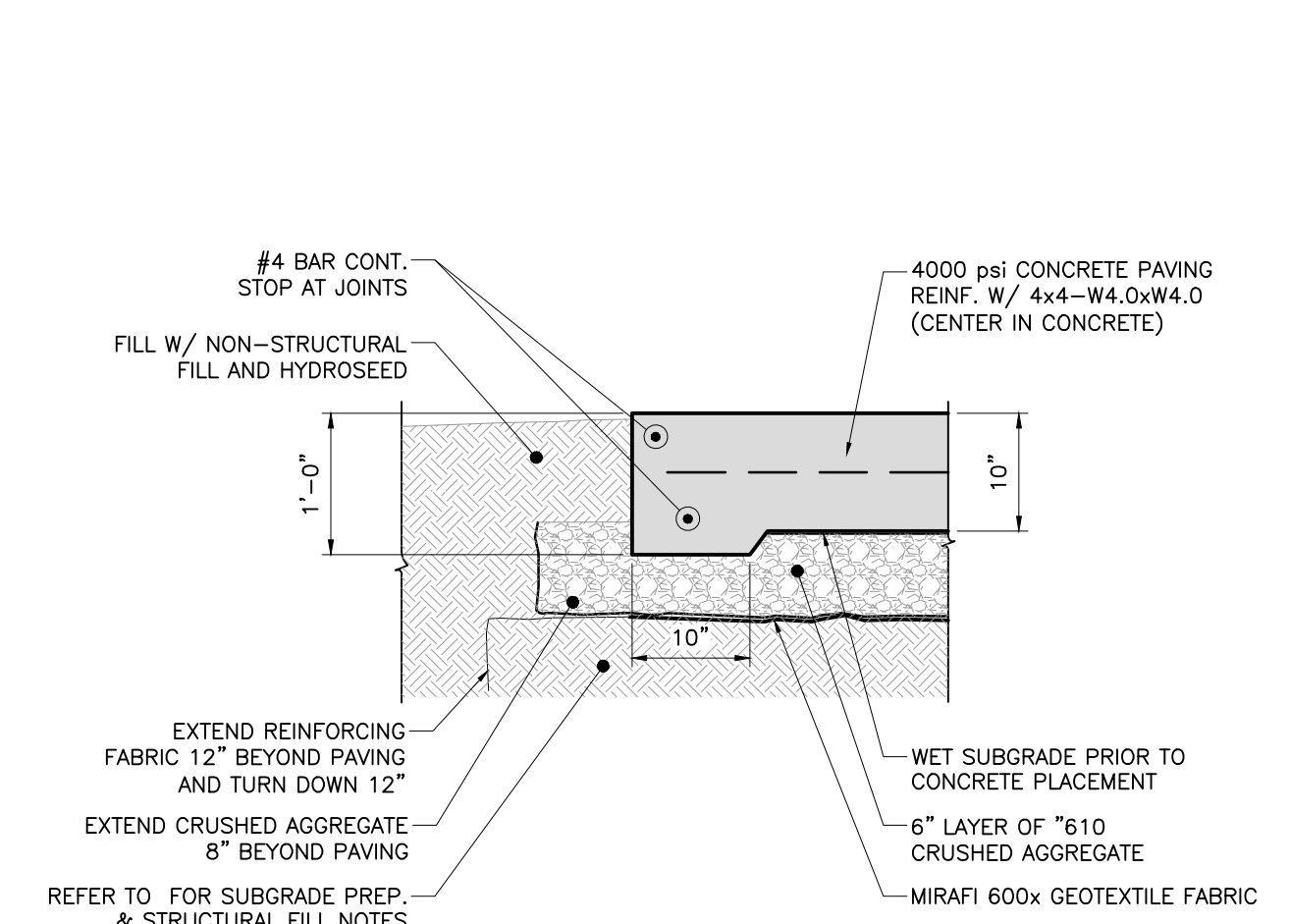
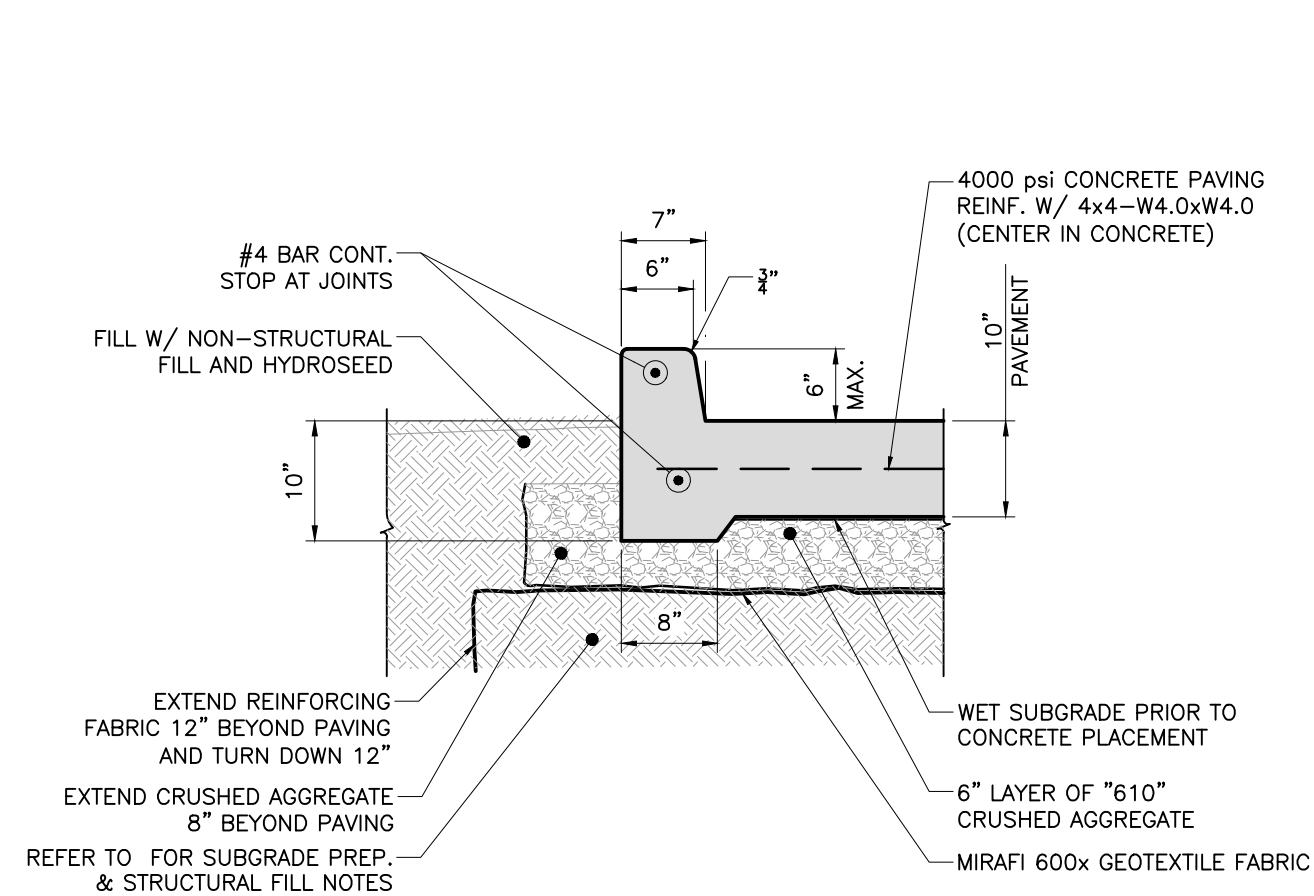
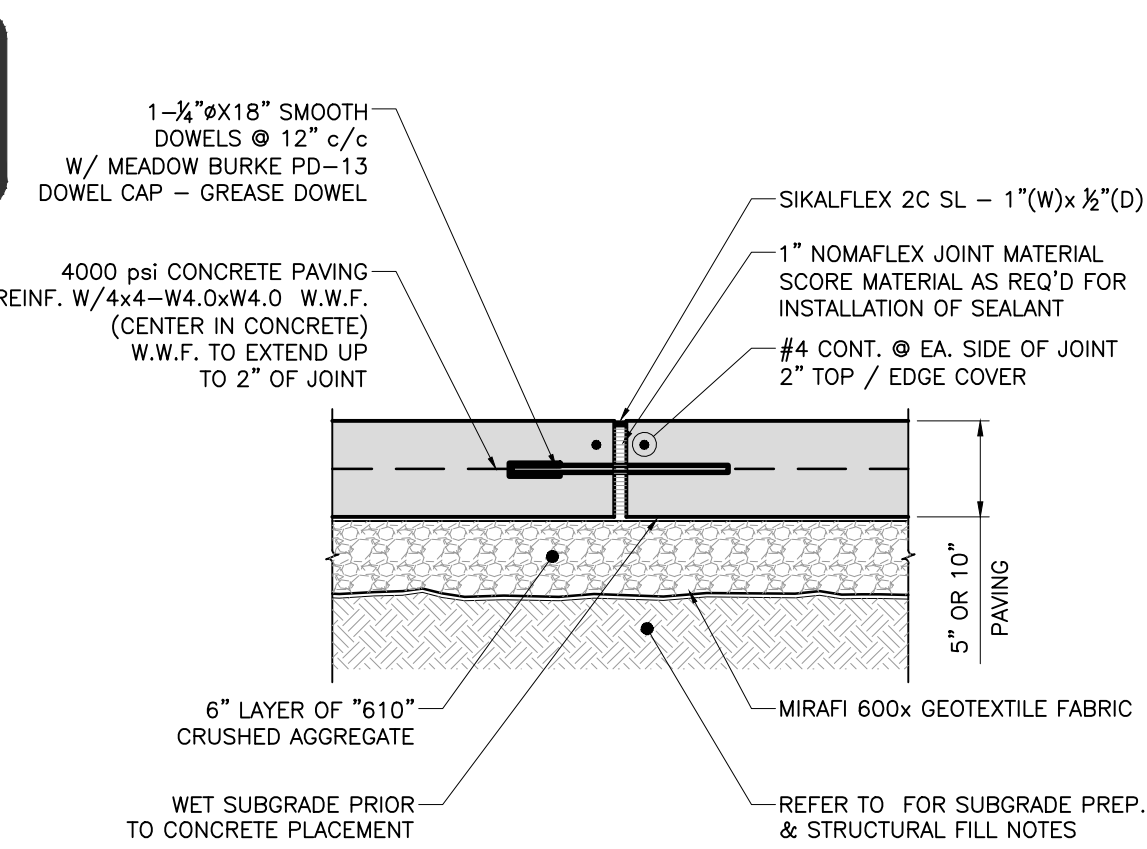


NOTE:
WELDED WIRE FABRIC REINFORCING TO BE DISCONTINUOUS @ EXPANSION AND CONTRACTION JOINTS

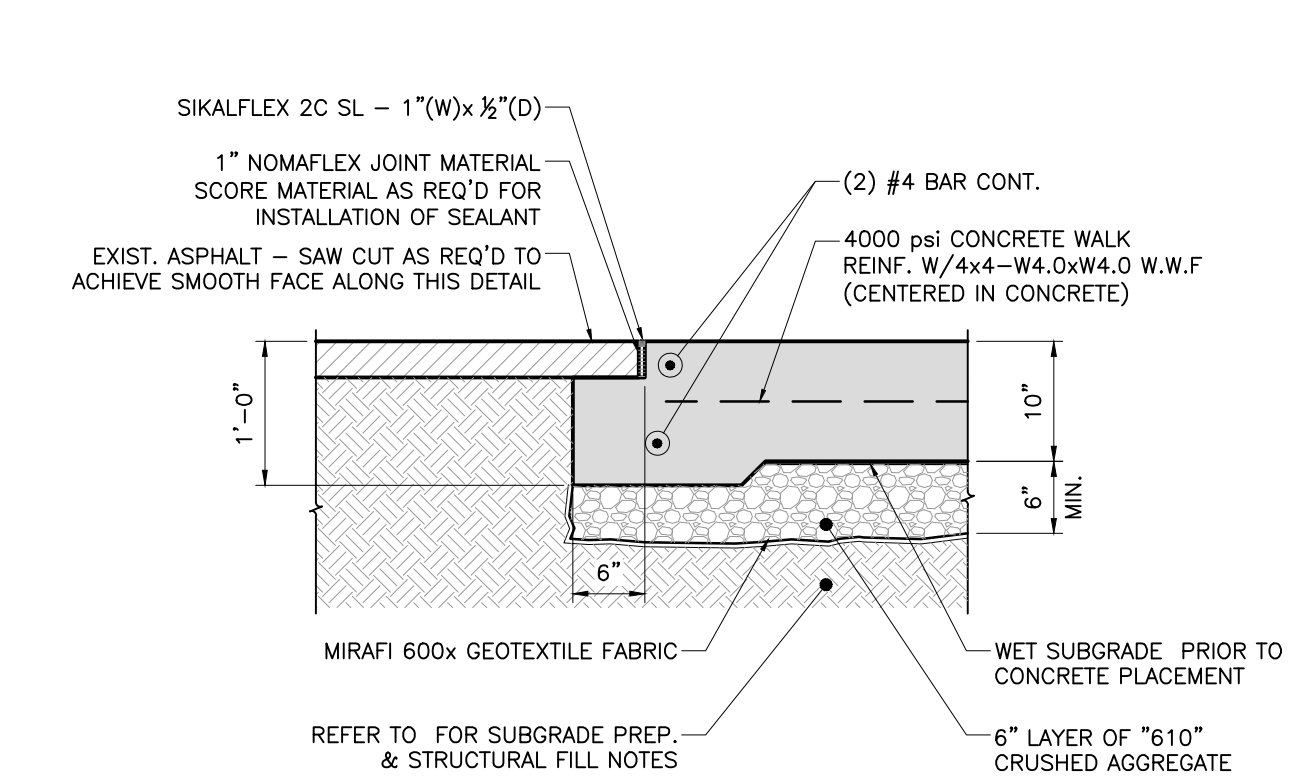
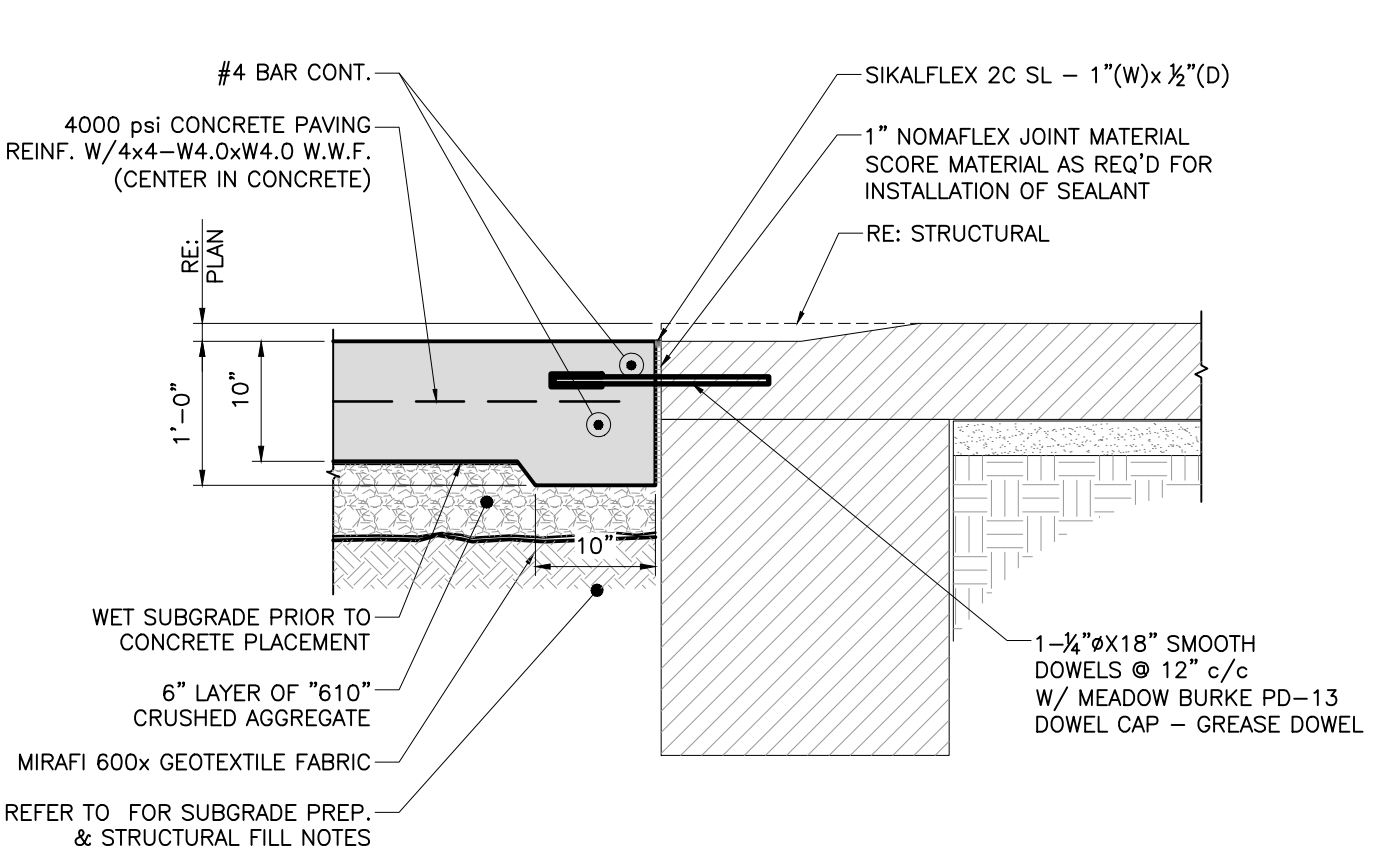
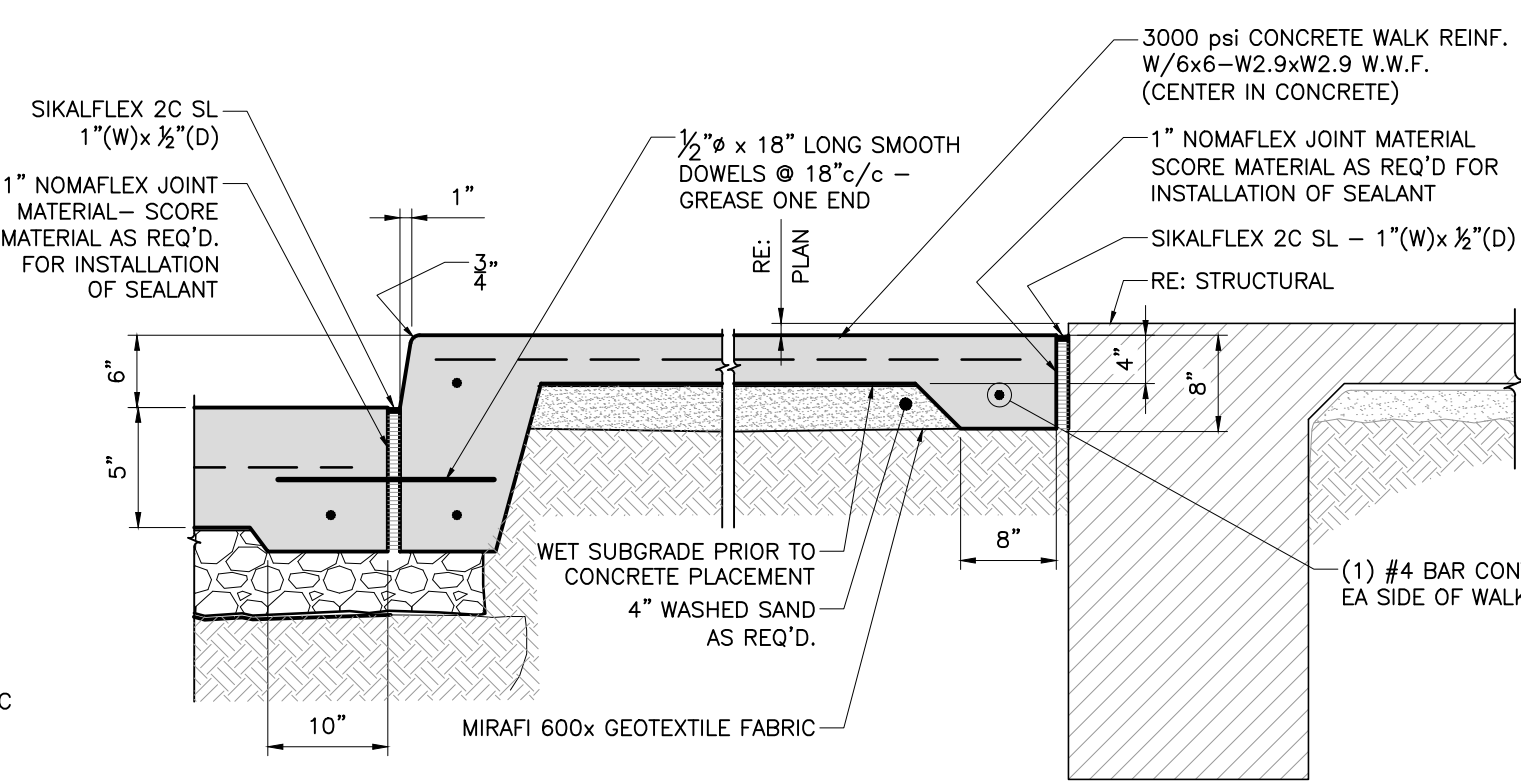
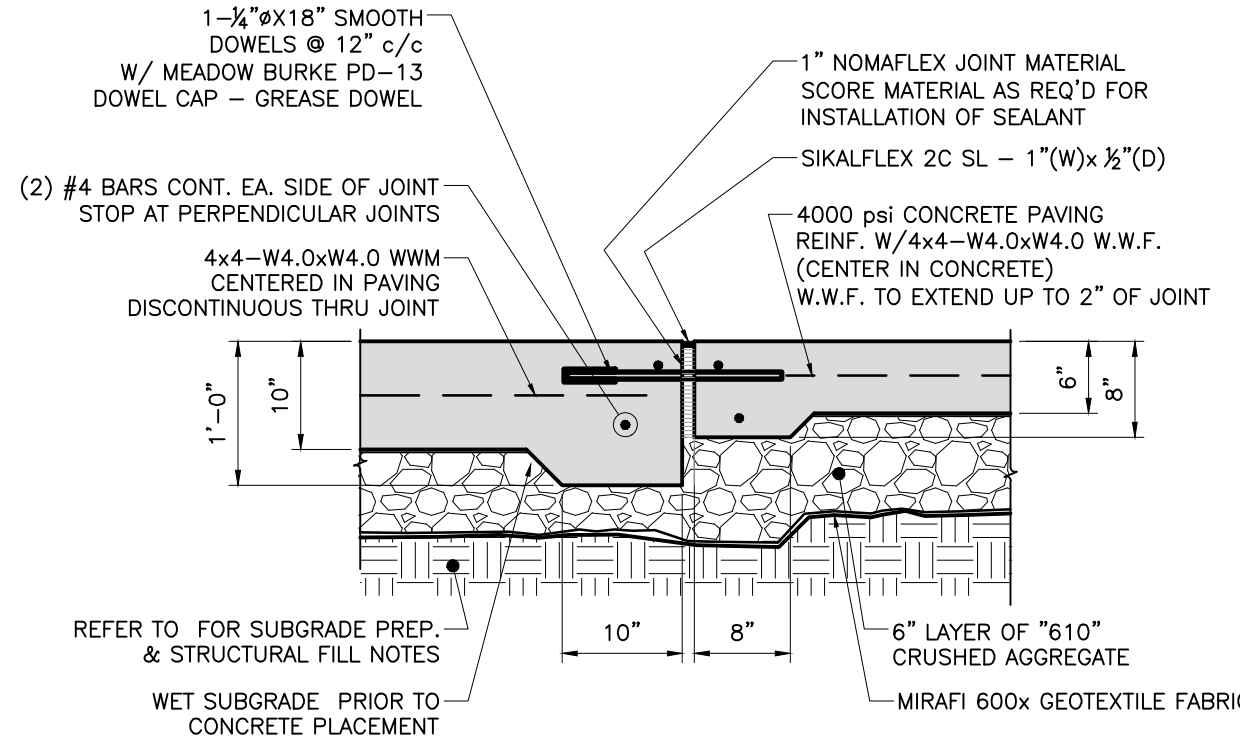


A SECTION - CONTRACTION JOINT (C.J.)
SCALE: 3/4" = 1'-0"

B SECTION - EXPANSION JOINT (E.J.)
SCALE: 3/4" = 1'-0"

C SECTION
SCALE: 3/4" = 1'-0"

D SECTION
SCALE: 3/4" = 1'-0"

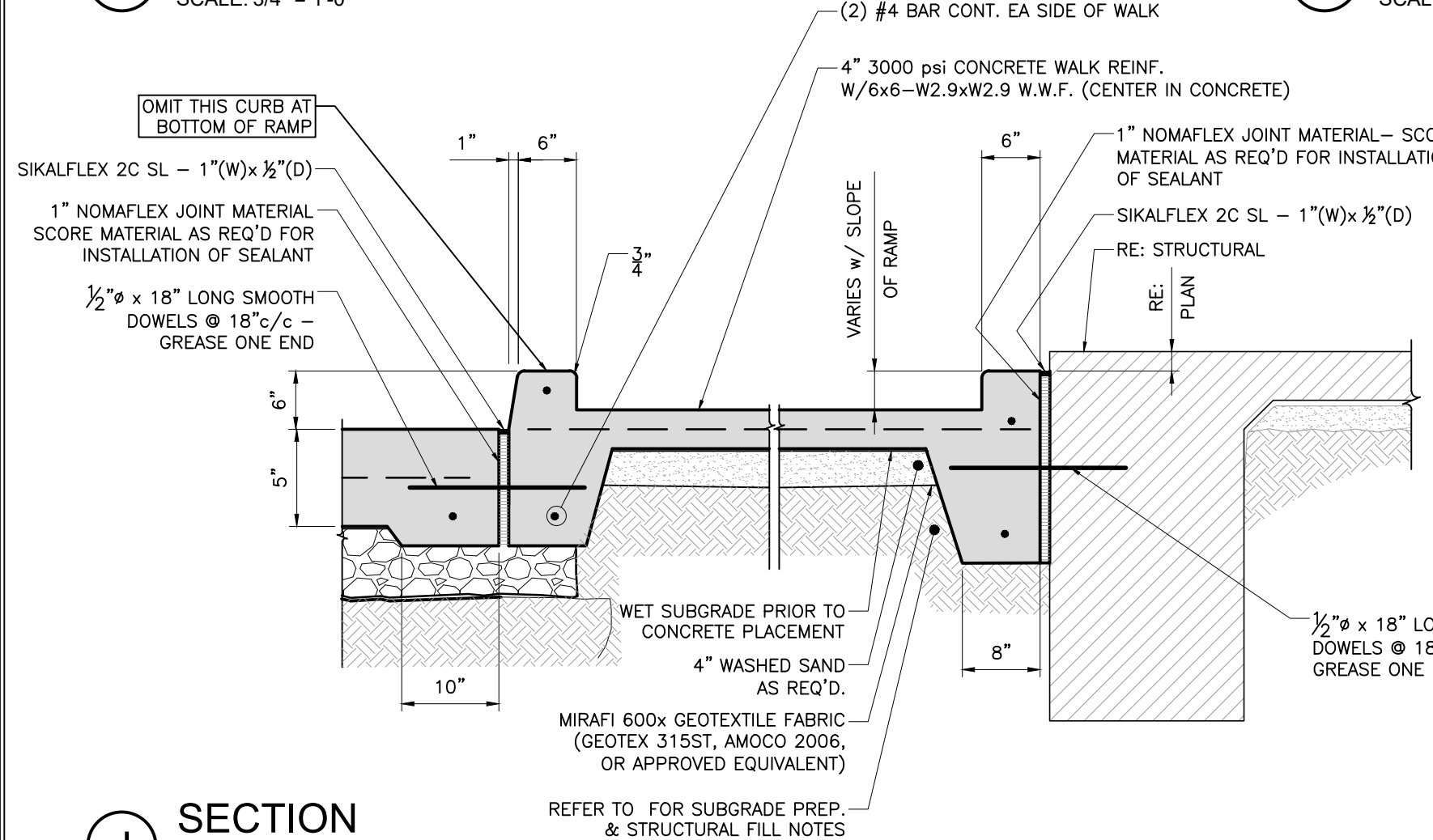


E SECTION
SCALE: 3/4" = 1'-0"

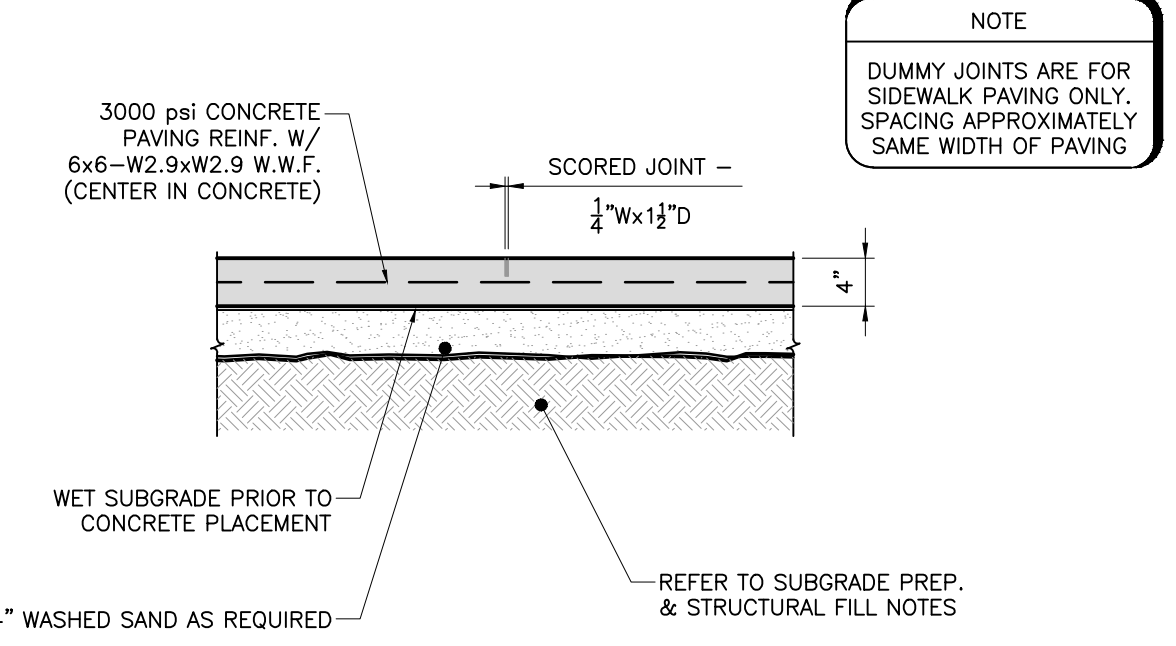
F SECTION
SCALE: 3/4" = 1'-0"

G SECTION
SCALE: 3/4" = 1'-0"

H SECTION
SCALE: 3/4" = 1'-0"



NOTE:
WALKS TO BE SLOPED FOR POSITIVE DRAINAGE AWAY FROM BUILDING. SLOPE 1:50 ACROSS WALK



NOTE:
DUMMY JOINTS ARE FOR SIDEWALK PAVING ONLY. SPACING APPROXIMATELY SAME WIDTH OF PAVING

1 TYP. SIDEWALK DETAIL
SCALE: 3/4" = 1'-0"

2 TYP. SIDEWALK "DUMMY JOINT" DETAIL
SCALE: 3/4" = 1'-0"

J SECTION
SCALE: 3/4" = 1'-0"

JOINT NOTES

- EXPANSION JOINT DETAIL MAY BE USED AS CONSTRUCTION JOINT; SUBMIT POUR PLAN TO ENGINEER FOR REVIEW.
- SAW-CUTS TO EXTEND THROUGH FULL DEPTH OF CURBS; PROVIDE BACKER ROD AND SEALANT AT ALL FACES OF CURB.
- JOINT SEALANT TO BE INSTALLED IN COMPLIANCE WITH MFR'S WRITTEN INSTRUCTIONS. INSTALLATION OF JOINT MATERIAL TO BE NEAT AND CLEAN AND NOT PROTRUDE BEYOND LIMITS OF JOINT. THOROUGHLY CLEAN JOINT PRIOR TO INSTALLATION OF JOINT SEALANT; ENSURE CURING COMPOUND IS NOT INSTALLED AT FACES OF JOINT.
- EXPANSION JOINT MATERIAL TO BE SCORED TO A DEPTH OF 1/2" BELOW T/PAVING ELEVATION TO ALLOW PROPER INSTALLATION OF JOINT MATERIAL.
- CONTRACTOR RESPONSIBLE FOR STRAIGHT AND TRUE INSTALLATION OF EXPANSION JOINT MATERIAL, TO INCLUDE INSTALLATION OF TEMPORARY SUPPORTS AS REQUIRED.
- CONTRACTOR SHALL INSTALL BLOCKS AND SUPPORTS OF A QUANTITY AND SPACING (BUT NOT TO EXCEED FOUR FEET C/C) NECESSARY FOR UNIFORM ELEVATION PLACEMENT OF THE W.W.F. CONTRACTOR TO SUBMIT PRODUCT FOR REVIEW BY ENGINEER DURING SUBMITTAL PROCESS.
- CONTRACTOR TO INSTALL STRING LINES OVER ALL JOINTS PRIOR TO PRE-POUR INSPECTION TO ALLOW ENGINEER TO VERIFY JOINT CONDITIONS. PROPOSED SAW-CUT LOCATION TO BE APPARENT AND CENTER (+/- 1/2") OVER CENTER OF DOWEL.

MATERIAL SPECIFICATIONS

CRUSHED STONE AGGREGATE:

CRUSHED AGGREGATE SHALL MEET THE LADOTD SPECIFICATION FOR 610 ROAD BASE MATERIAL. INSTALL CRUSHED LESTONE OVER GEOTEXTILE MATERIAL. LIMESTONE AGGREGATE SHALL BE ROLLED SMOOTH TO FORM A TIGHT SURFACE WITH A LOADED DRUM ROLLER. CONTRACTOR SHALL USE A VIBRATORY PLATE WHEN LOCATION RESTRICTS THE USE OF THE DRUM ROLLER. REFER TO SPECIFICATION SECTION 321220 "CRUSHED AGGREGATE" FOR FURTHER REQUIREMENTS.

STORM DRAINAGE PIPE:

UNDERGROUND STORM DRAINAGE PIPES ARE SHOWN ON PLAN WITH THE LENGTHS OF PIPE MEASURED TO THE CENTER OF THE CATCH BASINS PLUS OR MINUS ONE FOOT. THE CONTRACTOR SHALL PERFORM A PIPING LAYOUT TO VERIFY LOCATIONS OF CATCH BASINS AND LENGTHS OF PIPE.

UNDERGROUND STORM DRAINAGE PIPES SHALL BE PVC SDR (26) ASTM D3034 PIPE OR HP DUAL WALL PIPE AS SPECIFIED. PIPES SHALL BE LAYED ON A MINIMUM 3 INCH SAND BED AND BACKFILLED WITH CRUSHED LIMESTONE TO AN ELEVATION LEVEL WITH THE TOP OF PIPE AND THEN BACKFILLED WITH STRUCTURAL FILL TO AN ELEVATION TO MATCH ADJACENT GRADE. CONTRACTOR SHALL ANCHOR PIPE AS RECOMMENDED BY PIPE MANUFACTURER TO PREVENT PIPE FLOATATION.

IT IS THE CONTRACTOR'S RESPONSIBILITY TO DETERMINE ALL FITTINGS REQUIRED FOR PIPING, INLETS, ETC. TO COMPLETE PIPING SYSTEM.

GEOTEXTILE MATERIAL:

GEOTEXTILE MATERIAL SHALL BE MIRAFI 600X. GEOTEXTILE SHALL BE PINNED TO SUBGRADE AS INSTRUCTED BY MATERIAL MANUFACTURER. MATERIAL SHALL BE OVERLAPPED A MINIMUM OF 18 INCHES AT JOINTS. ALL NON OVERLAPPING JOINTS SHALL BE BURIED A MINIMUM OF 8 INCHES BELOW THE SUBGRADE SURFACE.

RMG ARCHITECT

RANDY M. GOODLOE, AIA, APAC
725 KIRBY STREET
LAKE CHARLES, LOUISIANA

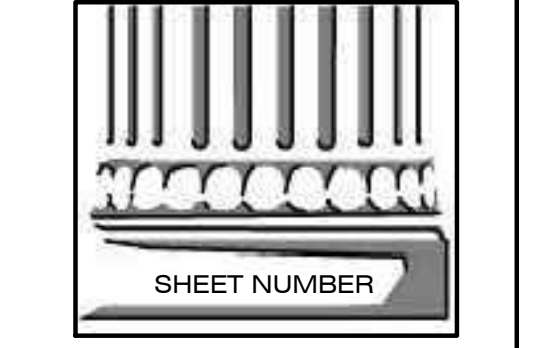
OFFICE: 337.436.3036
FAX: 337.436.3773



NEW CONSTRUCTION
FORD PRO
FOR
MIKE WILLIS
2010 PATTON ST.

© COPYRIGHT 2019,
RANDY M. GOODLOE, A.I.A. APAC
ALL INFORMATION, EITHER DRAWN, WRITTEN, OR IMPLIED, APPEARING IN THIS DOCUMENT SHALL NOT BE DUPLICATED, DISCLOSED, OR OTHERWISE USED WITHOUT THE WRITTEN PERMISSION OF THE AUTHOR, RANDY M. GOODLOE, AIA, APAC. THIS DOCUMENT IS AN INSTRUMENT OF SERVICE AND IS THE SOLE PROPERTY OF THE AUTHOR. FURTHERMORE, THE USE OF THIS DOCUMENT FOR ANY PURPOSE SHALL BE REVOKED, IF THE INTENT OF THE DESIGN OR THE CONSTRUCTION TECHNIQUES OR DETAILS SHOWN HEREIN ARE NOT ADHERED TO OR THE CONTRACTUAL AGREEMENT GOVERNING THEIR USE ARE NOT STRICTLY ADHERED TO.

PROJECT NO.	25012
PROJECT MANAGER	TM
DATE ISSUED	05.22.26
REVISED	



DUHON + PLEASANT
CIVIL & STRUCTURAL ENGINEERS

C-103
SECTIONS & DETAILS